



# **ZACH'S** **BOAT LIFT SERVICE**

CREATING MEMORIES ONE DOCK AT A TIME



[zblservice.com](http://zblservice.com) | [zach@zblservice.com](mailto:zach@zblservice.com) | Zach Sherwin - 402.297.4247 | Don Tex - 402.619.6858

# THE PREMIER DEALER IN THE MIDWEST

Thank you to our incredible team and amazing customers - **Zach's Boat Lift & Dock Service is the number one ShoreMaster dock and boat lift dealer in the Midwest.** As a premier custom dealer - **we stock more ShoreMaster products than anyone in the Midwest** allowing our customers to quickly have their newest dock, lift or accessories installed upon request. We strive everyday to give our customers the very best product, customer service and support. No matter what, we will always put the customer first.

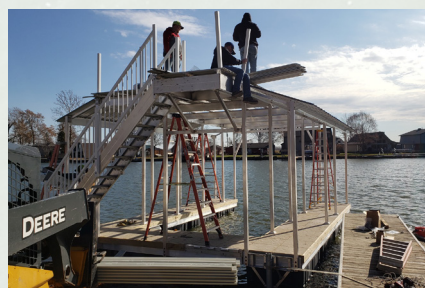
Zach grew up on a lake in Nebraska and there's nothing about lake life he doesn't love. From being on the water to meeting new people to building great products - he loves it all, so nearly twenty years ago, when the opportunity presented itself - Zach's Boat Lift & Dock Service was born. The company that started as 1 now has 11 amazing employees and the dedication, compassion, energy and unique skill set with EACH individual on our team is second to none. Our team of amazing employees is what makes us who we are. Each and every one of them is reliable, dedicated, creative, intelligent, passionate and so much more. Without them, we wouldn't be able to do what we do. For that, we are so grateful.

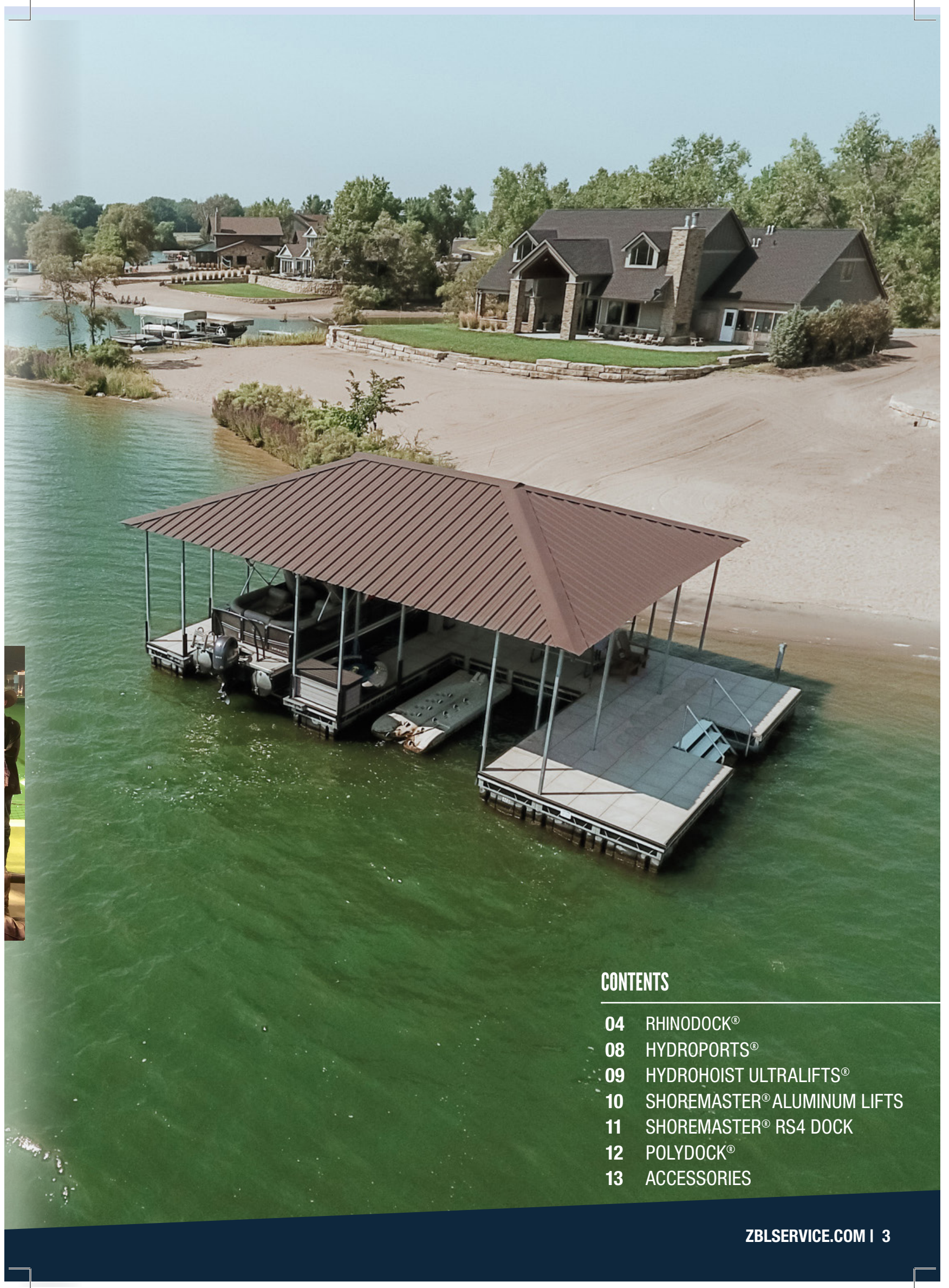
With his brother as an install technician, his wife helping with marketing and his younger sons helping 'drive equipment' - the family business has blossomed over the years. This growth allows our team to help so many lake residents get the most out of their time on the water. **Over the past 20 years, we've serviced over 50 lakes in the Midwest and helped countless customers make wonderful new memories with friends and family on the water.** From small Nebraska farm ponds to the Missouri River to giant lakes, we've built countless waterfront systems that will last lifetime after lifetime.



## THE SERVICE AND INSTALL GUARANTEE

We're the only dealer in the area that will never sub out your service or installation. You will ALWAYS find our team installing and servicing your product. You purchased your product from us which means you trust us. We won't ever break that trust. That's our promise.





## CONTENTS

- 04 RHINODOCK®
- 08 HYDROPORTS®
- 09 HYDROHOIST ULTRALIFTS®
- 10 SHOREMASTER® ALUMINUM LIFTS
- 11 SHOREMASTER® RS4 DOCK
- 12 POLYDOCK®
- 13 ACCESSORIES

# RHINODOCK®

Our passion is to design, build and deliver a place for you to enjoy life on the water. RhinoDock is the industry's top-of-the-line dock system, available in both floating dock, and fixed dock configurations to perfectly match the requirements your waterfront property. Trust that your RhinoDock premium dock system is built with industry-leading strength, unmatched dock stability, and time-tested design.

## UNBEATABLE STABILITY AND STRENGTH

A 12-inch truss frame, concrete decking and more mean RhinoDock™ steel systems offer a level of security and stability that an aluminum floating system cannot match.

## A PERFECT FIT FOR YOUR UNIQUE NEEDS

You are in control - from the number of slips to the roof style and roof color, decking accessories, and beyond - your dock is uniquely yours.



## PREMIUM PROTECTION WITH PEACE OF MIND

RhinoFloat® flotation provide superior capacity, extreme puncture resistance, and are environmentally safe.

## DESIGNED FOR THE HARSHTEST CONDITIONS

Originally developed in the harshest conditions of the Lake of the Ozarks, our floating dock is time tested to withstand the harshest marine conditions and is the only setup we've seen that handles Nebraska's winds and storms.



# ROOF OPTIONS

## MARINE GABLE ROOF

The Marine Gable Roof originates from the original design lines of large multi-slip marinas found throughout the southern United States. This roof style is very cost competitive and simple to install while providing great watercraft protection.



## A-FRAME GABLE ROOF

The A-Frame Gable Roof provides RhinoDock owners a traditional look that is familiar and similar to typical home roof construction in design and shape. The A-Frame gable allows for a wide range of deck and patio configurations.



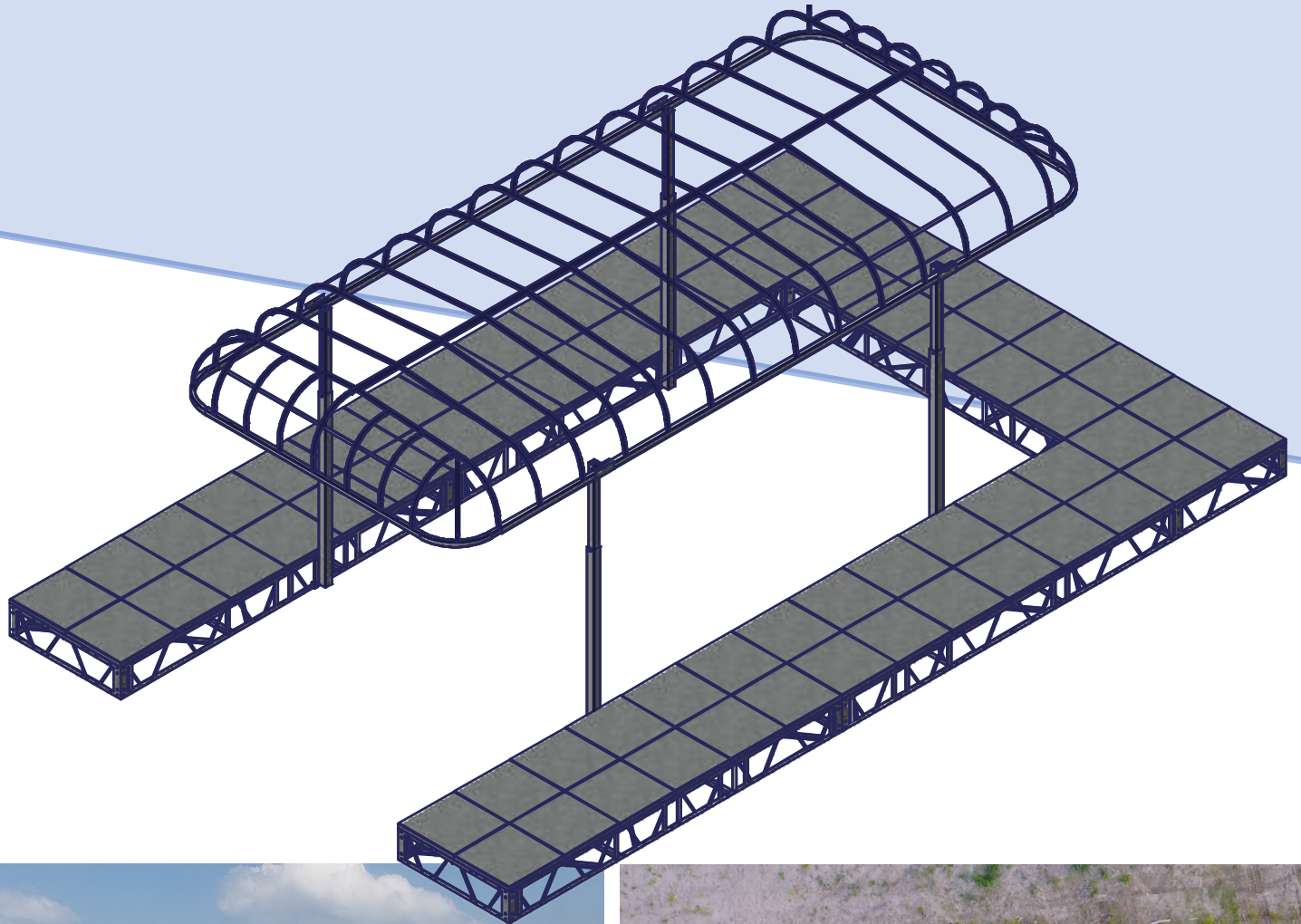
## HIP ROOF

The Hip Roof from Rhino Marine Systems is an attractive option and is generally chosen when customer is seeking to match the dock roof lines to those of the home for a consistent appearance.



# CANOPY FRAMES

For a lighter and less permanent coverage option, pair the RhinoDock with a ShoreMaster Traditional Canopy Frame. Superior craftsmanship and design paired with premium components and fabrics provide the ultimate protection for your watercraft. Deep rounded ends allow you to tuck your watercraft completely underneath the frame, while our vented canopy covers, available in three premium fabrics, still allow for breath-ability to inhibit mold and mildew.



# METAL ROOF COLOR SWATCHES

RhinoDock offers 14 standard colors and 2 premium roof panel colors to choose from to provide you with a dock system that matches your style and your shoreline. RhinoDock roofing panels are available in 26 gauge steel to provide you with the perfect balance between strength and weight.



# CANOPY COVERS COLOR SWATCHES

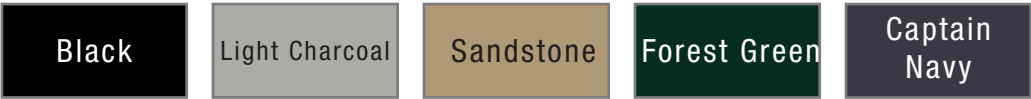
## HARBORTIME

HarborTime, offers a lightweight cover option, weighing 11 oz. per sq. foot. HarborTime is highly water repellent and resistant to both mildew and ultraviolet light making it ideal for a boat lift canopy.



## WEATHERMAX

WeatherMax® canopy covers offer superior protection from the elements for your boat. You'll enjoy WeatherMax's ease-of-use when it comes to installation, removal or storage of the cover because WeatherMax is incredibly lightweight and easy to handle.



## 13OZ VINYL

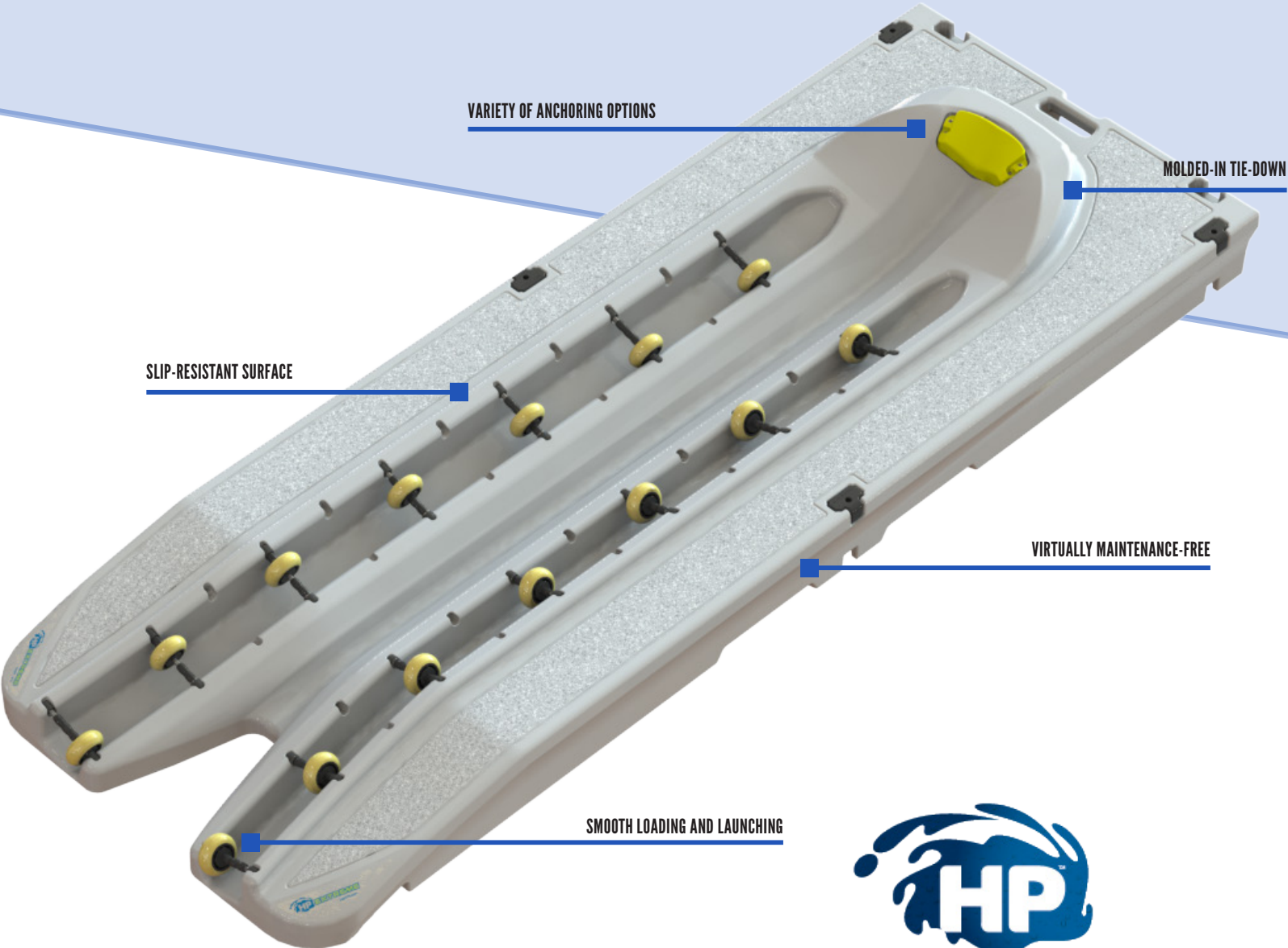
13oz vinyl canopy covers provides excellent tear, UV, mold and mildew resistance. Plus, at 13oz our covers are lighter than the industry standard, providing easier installation and removal without sacrificing the durability or moisture and UV protection that you expect from a premium canopy cover.



*Color swatches are printed representations only and should not be used for color matching. See your local dealer for actual color samples.*

# HP EXTREME™

HydroPort protects your craft and is the quickest and most convenient way to dry-dock your jet ski after a long day on the water. HydroPort is easy to own, too — the modular, rotationally molded construction means the HydroPort requires virtually no maintenance, and its deep-textured surface drains water back to the lake or river to keep your personal watercraft clean and dry. Built to ensure that your next on-the-water adventure is always just a few steps away, the HydroPort offers PWC storage and protection with virtually no maintenance.



LEARN MORE AT [BOATLIFT.COM](http://BOATLIFT.COM)

MODEL	CAPACITY	WIDTH	LENGTH	ACTUAL WEIGHT
HP Extreme	1,625 lbs.	58"	162"	390 lbs

AVAILABLE IN THREE COLORS:



# HYDROHOIST ULTRALIFTS®

Our most popular model boat lift, the ULTRALIFTS Series is built polyethylene tanks that are highly resistant to impact and low-water damage. Flexing when stressed, the tanks return undamaged to their original shape! All the steel parts are above water\* -a revolutionary enhancement for the industry- to defy rust, corrosion, and the elements. This protects your boat for years of convenient and carefree storage. We have models available to hoist boats ranging from 4,400-32,000 lbs. \*Standard installation

HydroHoist offers the UltraLift Series and HarborHoist models for Wake/Surf Boat styles. Our lifts feature polyethylene tanks that are highly resistant to impact and low-water damage. Flexing when stressed, the tanks return undamaged to their original shape! We have models available to hoist boats ranging from 4,400-32,000 lbs.



**HydroHoist®**  
**BOAT LIFTS**

LEARN MORE AT [BOATLIFT.COM](http://BOATLIFT.COM)

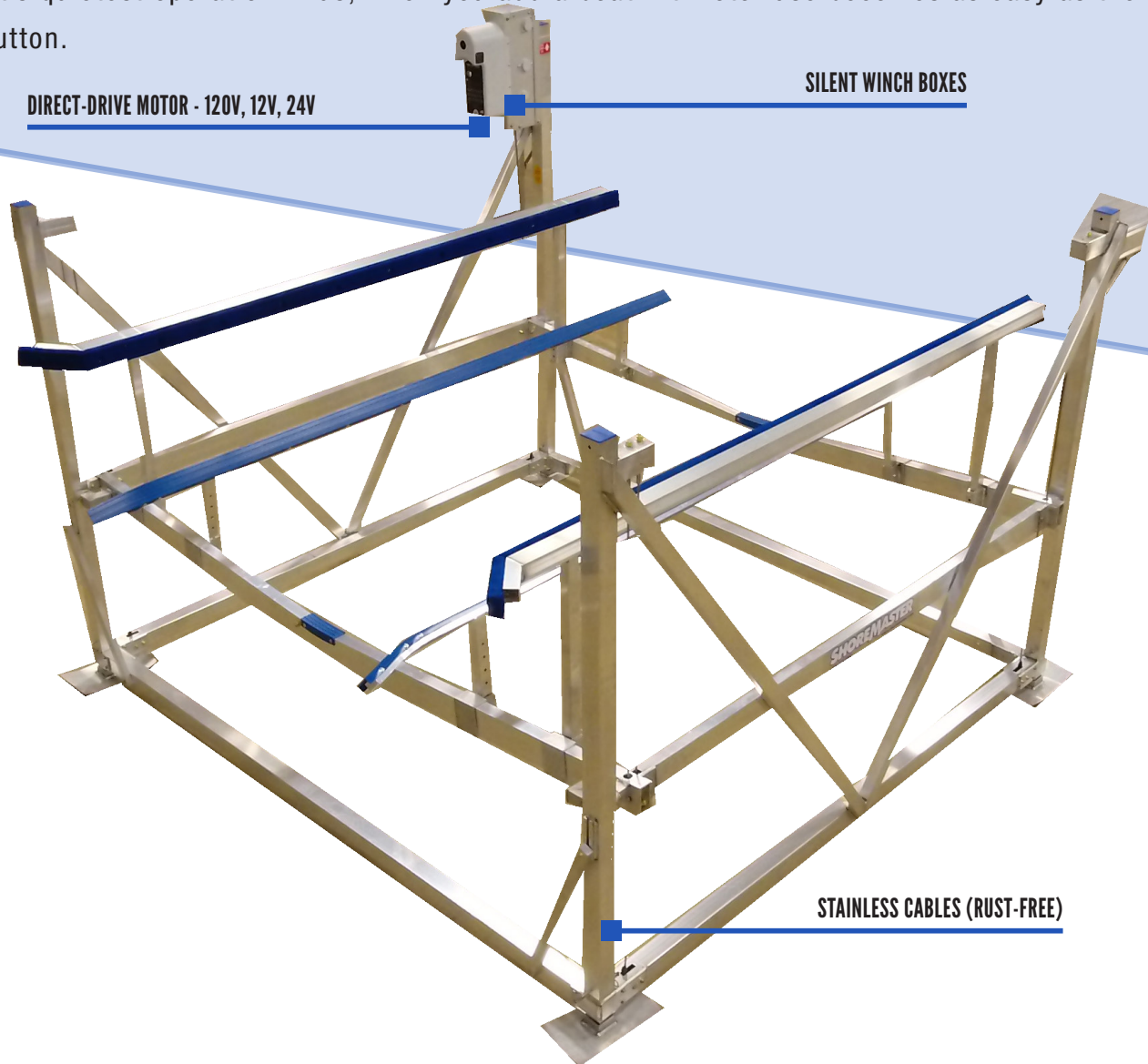


# SHOREMASTER VERTICAL LIFTS

The ShoreMaster Aluminum lift is the strong stationary lift to-date and can handle Nebraska's tough wind storms. As the pioneers of the welded aluminum boat lift with a passion for continuous improvement, we have perfected our design to offer superior stability, reliability and performance season after season. Welded construction and premium components make ShoreMaster Vertical Lifts the most trusted boat lift in the industry as well as the easiest to install and own. Our double v-side design provides easy access to your watercraft, and our exclusive Whisper Winch offers the market's quietest operation. Plus, when you add a boat lift motor use becomes as easy as the push of a button.

DIRECT-DRIVE MOTOR - 120V, 12V, 24V

SILENT WINCH BOXES



STAINLESS CABLES (RUST-FREE)



# SHOREMASTER INFINITY RS4 DOCK

Thousands of waterfront property owners just like you have chosen the Infinity RS4 sectional dock for its lightweight, yet solid, all-aluminum welded construction and InfinityTrack™ accessory system.



LEARN MORE AT [SHOREMASTER.COM](http://SHOREMASTER.COM)

## UNLIMITED CONFIGURABILITY

Maximize your shoreline with curved frame sections for clean lines and easy configurability.



## EASY CUSTOMIZATION

The InfinityTrack™ accessory system makes it easy to install and remove accessories without tools.



## PREMIUM STABILITY

5-Sided Dock Legs™ help provide three points for unmatched dock stability and safety.



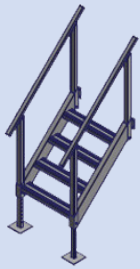
# POLYDOCK PRODUCTS

PolyDock is a modular, rotationally molded, polyethylene floating dock system designed to look great at your shoreline, and provide you with exceptional value for years. The recessed areas on the bottom of each section help to provide stability between the dock and the surface of the water. This means less movement as you walk the length and width of your dock system. PolyDock is designed to feel firm underfoot along the length and width of its slip-resistant brick patterned surface, so you and your family will enjoy every day spent on your PolyDock modular floating dock system. PolyDock is a great choice for nearly any waterfront application because its modular design is made to last, highly configurable, and easy to add on as your needs change, plus, PolyDock is easy to own because it requires minimal maintenance.

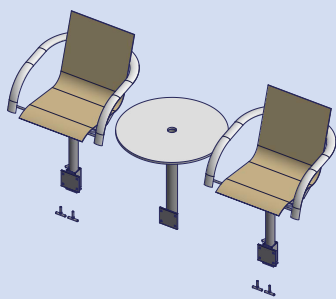
 **POLYDOCK**  
PRODUCTS  
LEARN MORE AT [POLYDOCKPRODUCTS.COM](http://POLYDOCKPRODUCTS.COM)



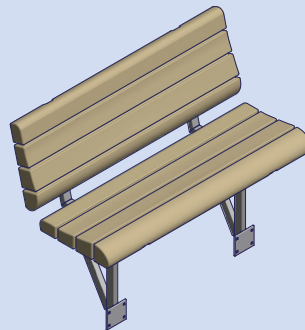
# AVAILABLE ACCESSORIES



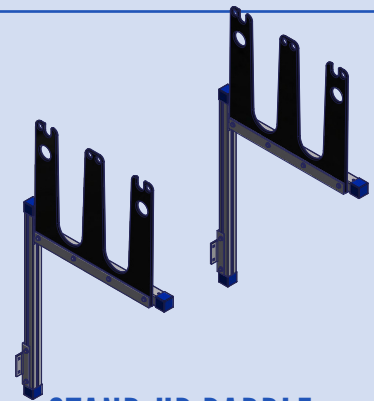
**DOCK STEPS**  
**4- AND 6- STEP OPTIONS**  
*(2 Styles Available)*



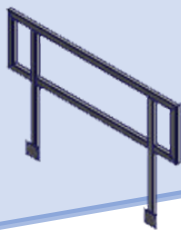
**DOCK FURNITURE**  
*2 Chairs, 1 Table,  
1 Umbrella*



**DOCK BENCH**  
*Available with or without  
armrests*



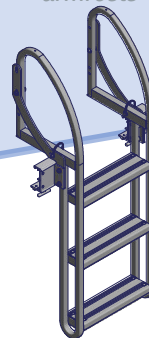
**STAND-UP PADDLE  
BOARD RACK**



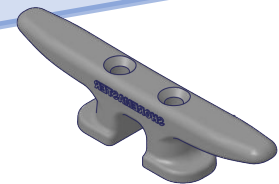
**HANDRAIL**  
*Various Lengths  
Available*



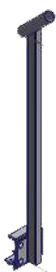
**DOCK BUMPERS**  
*Vertical, Horizontal, and  
Corner Options*



**PIVOTING DOCK LADDER**  
*Multiple Step  
Options Available*



**DOCK CLEAT**



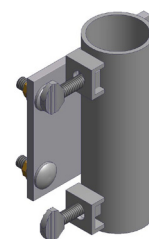
**FISHING ROD  
HOLDER**



**FLAG POLE**



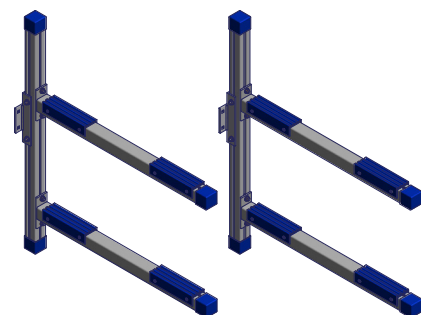
**WATERCRAFT  
ENTRY ASSISTANT**



**FLAGPOLE AND  
UMBRELLA HOLDER**

## WATERSPORTS RACK

*Get back on the water faster with the Watersports Rack. Store your paddleboard, kayak, or canoe off your dock for easy storage and access to all your watersports accessories. Choose between a single or double rack and attach anywhere along the perimeter of your dock to accommodate your setup and needs.*









**ZACH'S**  
**BOAT LIFT SERVICE**

CREATING MEMORIES ONE DOCK AT A TIME



**2863 WaConDa Road    Union, NE 68455**

[zblservice.com](http://zblservice.com) | [zach@zblservice.com](mailto:zach@zblservice.com) | Zach Sherwin - 402.297.4247 | Don Tex - 402.619.6858